



TRAFFORD COUNCIL

AGENDA PAPERS FOR TRAFFORD COVID-19 PUBLIC ENGAGEMENT BOARD

Date: Wednesday, 23 February 2022

Time: 10.00 am

Place: Virtual meeting:

<https://www.youtube.com/channel/UCjwblOW5x0NSe38sgFU8bKg>

A G E N D A	P A R T I	Pages
1. ATTENDANCES		
To note attendances, including officers, and any apologies for absence.		
2. DECLARATIONS OF INTEREST		
Members to give notice of any interest and the nature of that interest relating to any item on the agenda in accordance with the adopted Code of Conduct.		
3. MINUTES		1 - 4
To receive and, if so determined, to approve as a correct record the Minutes of the meeting held on 9 th February 2022.		
4. UPDATE ON THE CURRENT COVID-19 SITUATION IN TRAFFORD		5 - 24
To receive an update from the Acting Director of Public Health.		
5. 10 POINT PLAN UPDATE		
(a) Mass Testing		
To receive a verbal update from the Strategic Testing Lead.		
(b) Contact Tracing and Outbreak Management		
To receive a verbal update from the Covid-19 Project Manager.		
(c) Mass Vaccination		
To receive a verbal update from the Deputy Medical Director, Trafford		

CCG.

(d) **Community Engagement**

To receive a verbal update from Regulatory Services.

6. **PUBLIC ENGAGEMENT BOARD ACTIVITY**

For all Board Members to provide updates on any activity pertaining to the remit of the Board not covered elsewhere on the agenda.

7. **ANY OTHER BUSINESS**

To consider any other items of business not on the agenda which need to be considered by the Board before the next confirmed meeting.

SARA TODD

Chief Executive

Membership of the Committee

Council Leader or named Elected Member, nominated leads from opposition parties
VCSE representatives – including specialists relating to key population groups (older people; BAME; children; mental health , Learning Difficulties), Partnerships lead, Communications lead, Director of Public Health, Director of Adult Social Services, Director for Children's Services, Neighbourhood representatives, Clinical Commissioning Group representative, Trafford Local Care Organisation representative, Healthwatch Representative

.

Further Information

For help, advice and information about this meeting please contact:

Molly Shaw,
Tel: 07890032570
Email: molly.shaw@trafford.gov.uk

This agenda was issued on **22nd February 2022** by the Legal and Democratic Services Section, Trafford Council, Trafford Town Hall; Talbot Road, Stretford, Manchester, M32 0TH

WEBCASTING

This meeting will be filmed for live and / or subsequent broadcast on the Council's website and / or YouTube channel <https://www.youtube.com/user/traffordcouncil>

The whole of the meeting will be filmed, except where there are confidential or exempt items.

If you make a representation to the meeting you will be deemed to have consented to being filmed. By entering the body of the Committee Room you are also consenting to

Trafford Covid-19 Public Engagement Board - Wednesday, 23 February 2022

being filmed and to the possible use of those images and sound recordings for webcasting and/or training purposes. If you do not wish to have your image captured or if you have any queries regarding webcasting of meetings, please contact the Democratic Services Officer on the above contact number or email democratic.services@trafford.gov.uk

Members of the public may also film or record this meeting. Any person wishing to photograph, film or audio-record a public meeting is requested to inform Democratic Services in order that necessary arrangements can be made for the meeting. Please contact the Democratic Services Officer 48 hours in advance of the meeting if you intend to do this or have any other queries.

This page is intentionally left blank

Document Pack Page 1
Trafford Covid-19 Public Engagement Board

Wednesday 9th February 2022 – 10:00 a.m. – Virtual meeting

Present:

Councillor Freeman (Chair)	Executive Member for Covid-19 Recovery and Reform
Councillor Newgrosh	Member of the Health Scrutiny Committee, Trafford Council
Councillor Cordingley	Member of the Health Scrutiny Committee, Trafford Council
Councillor Acton	Chair of the Overview and Scrutiny Committee, Trafford Council
Councillor Blackburn	Ward Councillor, Trafford Council
Helen Gollins	Acting Director of Public Health, Trafford Council
Khan Moghal	Chair, Voice of BME Trafford
Andrew Latham	Chief Officer, HealthWatch Trafford
Dorothy Evans	Voluntary, African Caribbean Care Group
Ben Wilmott	Covid-19 Senior Project Manager, Trafford Council
Jilla Burgess-Allen	Consultant in Public Health, Trafford Council
Mark Jarvis	Medical Director, Trafford CCG
Ellie Caddick	Covid-19 Communications Lead, Trafford Council
Kirsty Johnson	Covid-19 Project Manager, Trafford Council
Danny Zammit	Strategic Neighbourhood Lead, Trafford Council
Beenish Hanif	Health Protection Lead, Trafford Council
Molly Shaw	Governance Services, Trafford Council
Alexander Murray	Governance Officer, Trafford Council

	Item	Decision / Action	Key Person for Action
1.	Welcome and apologies	Apologies were received from George Devlin.	
2.	Minutes	The minutes of the meeting 26 th January 2022 were agreed as an accurate record.	
3.	Membership	There had been no changes to the Membership since the last meeting.	
4.	Update on the current Covid-19 situation in Trafford	<p>The Board agreed to note the update.</p> <p>The following messages were shared with the Board:</p> <ol style="list-style-type: none"> 1. The Government were expected to release their guidance on 'living safely with Covid' soon; 2. The Public Health team had reviewed their plans for next year and would bring a plan for the next 12 months along to the next meeting of the Board; 3. The rates across Trafford had decreased with rates at 582.1 per 100,000; 4. Trafford had the third highest rates across Greater Manchester; 5. The positivity rate was 13%; 	<p>All</p> <p>Public Health</p>

		<ol style="list-style-type: none"> 6. 0-14 and 30-44 year olds had the highest rates; 7. The rates in over 60s had decreased to 335 per 100,000; 8. Broadheath, Ashton upon Mersey, Hale Central and Village wards had the highest rates across Trafford; 9. The number of Covid-19 related admissions into hospitals across Greater Manchester had declined; 10. There is a higher number of reinfection rates in the North of the borough where the vaccination rates are lower; 11. People needed to take additional care (even if vaccinated) by avoiding crowded places, meeting people outdoors where possible, wearing a mask, keeping up with hand hygiene, and working from home if able. 	
5.	10POINT ACTION PLAN		
5a.	Mass Testing	<p>The Board agreed to note the update. The following messages were shared with the Board:</p> <ol style="list-style-type: none"> 1. Staff in adult social care settings were being asked to take a Lateral Flow test at the start of each work day which means the weekly asymptomatic PCR test is no longer required; 2. That demand for Lateral Flow tests had dropped; 3. That it was important to plan ahead and take a Lateral Flow test if: <ol style="list-style-type: none"> a. Visiting elderly people b. Visiting a crowded place c. Attending work or school 4. To encourage people to get PCR tests when experiencing any symptoms. 	All
5b.	Contact Tracing and Outbreak Management	<p>The Board agreed to note the update. The following messages were shared with the Board:</p> <ol style="list-style-type: none"> 1. There was 5 primary schools meeting outbreak thresholds; 2. The year groups with the highest number of cases were from Year 2 to Year 9; 3. There was no current outbreaks in workplace settings; 4. The local Contact Tracing team carried out contact tracing with Level 2 cases and had a completion rate of 80% which was the highest across Greater Manchester; 5. The self-isolation pathfinder evaluation was ongoing; 	All

		<ol style="list-style-type: none"> 6. Support had been given to 71 people in the last week across Trafford who were self-isolating; 7. To be able to claim the £500 self-isolation support you must have a confirmatory PCR test within the 10 day self-isolation period; 8. Unvaccinated contacts of a positive case must still isolate for 10 days. 	
5c.	Care Homes and Supported Accommodation	<p>The Board agreed to note the update. The following messages were shared with the Board:</p> <ol style="list-style-type: none"> 1. The outbreaks in care home settings had reduced significantly and at present there was only 3 with outbreaks, compared with 28 in January; 2. The cases in care home outbreaks had mostly been staff, not residents, which highlights the success of PPE; 3. The cases of residents had mostly been mild symptoms which demonstrates the success of the vaccination programme; 4. Residents in care homes now isolate for 10 days rather than 14 days; 5. There were no restrictions on the number of visitors a care home resident can have, providing the care home is not in an outbreak situation; 6. The visiting restrictions for under 16s have been lifted. 	All
5d.	Mass Vaccination	<p>The Board agreed to note the update. The following messages were shared with the Board:</p> <ol style="list-style-type: none"> 1. 80% of the eligible population have been double vaccinated; 2. 85% of the eligible population have been boosted; 3. The majority of 12-15 year olds are now eligible for their 2nd dose but the uptake for this dose was very low; 4. It was considered that a letter be sent out to all secondary schools across Trafford emphasising the importance of the 12-15 year olds having their second dose. 	All

5e.	Update and escalations from the COVID-19 Community Engagement Group	<p>The Board agreed to note the update.</p> <p>The following messages were shared with the Board:</p> <ol style="list-style-type: none"> 1. The team were door knocking to promote the mobile vaccination clinics; 2. The team were helping schools to boost the uptake of the 12-15 year old vaccine programme; 3. Primary schools were being contacted to deliver sessions to promote covid-safe behaviours. 	All
6.	Public Engagement Board Activity and Feedback	None.	
7.	Any Other Business	None.	
8.	Date of Next Meeting	Wednesday 23 rd February 2022 at 10:00 a.m.	



Weekly External COVID-19 Data Briefing

The reported week in these briefing slides cover the 7-day period between 11 February and 17 February 2022

Trafford Public Health Team

Epi Summary (1 of 2)

Overview

- There were **688** confirmed cases during the week ending Thursday 17 February 2022, with the highest number of cases (**115**) reported on **Tuesday 15 February**.
- Our 7 day case rate has decreased to **289.6/100k** from **442.8/100k** in the previous week; we expect further decreases in the coming days.
- We are currently seeing our lowest case rate since early August 2021.
- Trafford's case rate is below the North West (**304.7/100k**) and England (**443.4/100k**) average. Trafford has the 2nd highest case rate across the 10 GM boroughs.
- Trafford's testing (at **295.3/100k** from **371/100k**) and positivity (at **9.4%** from **10.8%**) rates have dropped from the previous week.

Age Profiles

- Case rates continue to drop for all ages.
- Case rates remain highest for 30-44 year olds (at **459.3/100k** from **662.2** in the previous week).
- There has been further reductions in positive cases for residents aged 60+ (at **194.6/100k** from **276.1/100k** in the previous week).
- PCR testing rates have reduced for all age groups when compared to the previous week. PCR testing rates remain highest for residents above the age of 74.

Epi Summary (2 of 2)

Geography

- Case rates have dropped for all wards when compared to the previous week.
- Case rates remain highest for wards in Trafford's Central and South Localities.

Hospital Activity

- We have seen further reductions in the number of local hospital admissions linked to COVID-19. However, the reduction in hospital admissions is slowing down, yet to drop to levels prior to December 2021.
- There were **212** COVID-19 admissions during the week ending Sunday 13 February 2022 compared with **238** COVID-19 admissions during the previous week.

Mortality

- Although there was a slight increase in the number of deaths linked to COVID-19 at the end of January, we are now seeing those figures decline.

Public Health Concern

We have seen a continued reduction in Trafford's case rate over the past week; current case rates resemble levels that we were seeing in late July/early August, following the emergence of the Delta variant. We will see further reductions over the coming days, however we would expect to see a levelling-off in our case rate over the coming weeks. Across GM, Trafford (along with Stockport) has seen a slower reduction in its case rate when compared to other boroughs; Trafford has higher PCR and LFD testing rates, but low positivity rates, indicating that Trafford's testing behaviours are contributing to higher case rates when compared to other GM boroughs.

As we start to see further reductions in testing over the coming months, our understanding of data accuracy and trend analysis will change. Other surveillance means will start to become utilised, however these techniques are still in development.

Post December 2021 has seen a visible increase in the number of COVID-19 re-infections. The Omicron variant seems to be a driving factor in these re-infections, indicating that people are still at risk of COVID-19 even if they have had the infection previously. We are keeping a close eye on the data to see if any noticeable trends are occurring throughout the borough.

COVID-19 vaccinations continue to provide the most effective protection against COVID-19 infection and the link with hospital admissions/COVID-19 mortality. We have seen a continued reduction in local hospital admission over the past 6 weeks. The number of residents occupying mechanical ventilation beds did not increase throughout this period, as levels are at their lowest since June 2021. Additionally, mortality linked with a positive COVID-19 test result throughout January/February 2022 was much lower than levels in January/February 2021. This could be a positive indication of protective vaccine effects.

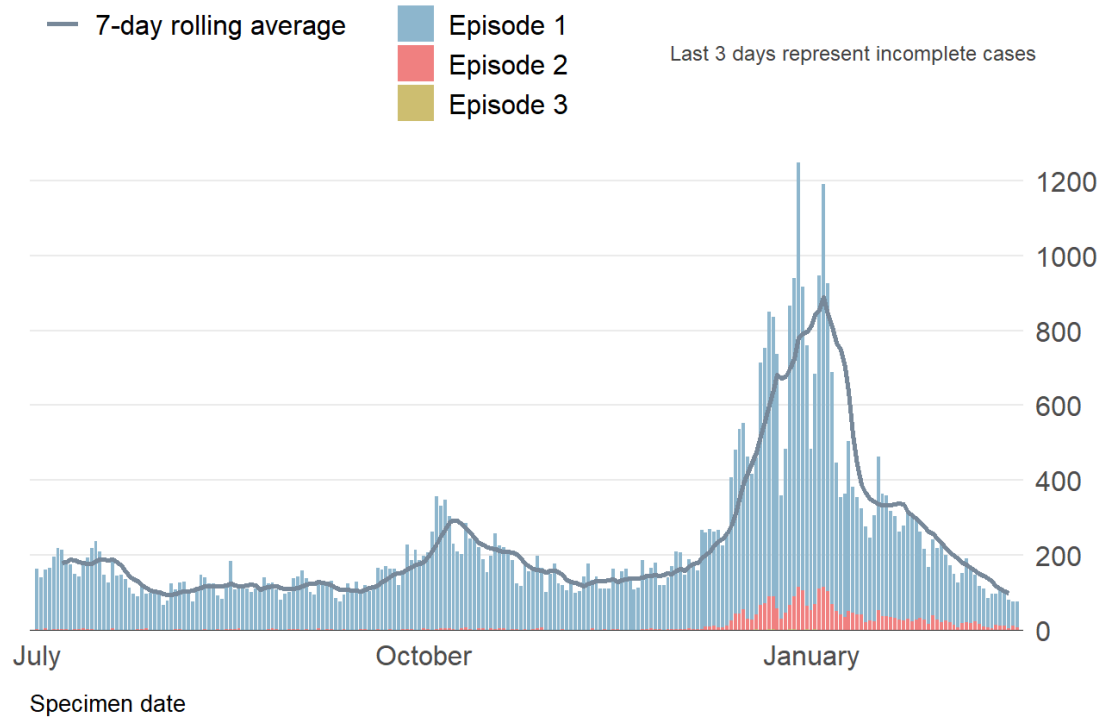
On February 21st, the Prime Ministers announced the 'Living with COVID-19' plan. Restrictions will be lifted in stages from the 21st February through to April 1st. The local COVID-19 response team continues to focus on preventative measures, communicating COVID secure behaviors, and advising caution in high risk settings.

COVID-19 measures

- The Government's 'Living with Covid' plan was published on 21/02/22.
- The local COVID-19 response team continues to focus on preventative measures, communicating COVID secure behaviors, and advising caution in high-risk settings.
- Positive cases must still isolate but will be able to leave self-isolation if they take LFD tests on two consecutive days from Day 5.
 - Both test results on each day must be negative and if the case does not have a high temperature, they can leave self-isolation.
 - If either of the LFD results on days 5 or 6 show a positive result they should continue their self-isolation until they have 2 consecutive negative tests.
 - LFD test results should to be registered.
 - Self isolation is advised however not mandatory, residents are asked to stay at home if they can and avoid contact with other people. Residents will not have to take daily tests or be legally required to self-isolate following contact with someone who has tested positive for COVID-19.
- People in England who receive a positive lateral flow test will NOT be asked to take a confirmatory PCR test, unless:
 - they wish to claim the Test and Trace Support Payment (available to claim until 24th February 2022)
 - they have been advised to take a PCR test because they are in a clinically vulnerable group who may need early access to treatment
 - they have been advised to take a PCR test as part of a research, antiviral or surveillance programme
- **LFD test is used for asymptomatic testing. People with symptoms, should have a PCR test.** If anyone with symptoms has already taken an LFD test for any reason and the result is positive, they do not need to take a follow up PCR test, unless they meet one of the points above
- Anyone aged 5 years and over, who has been identified as a contact of someone with COVID-19 and who is not legally required to self-isolate, is now strongly advised to take a rapid lateral flow device (LFD) test every day for 7 days.
- Unvaccinated close contacts must self-isolate for 10 days.
- Anyone with symptoms or a positive test result should immediately self-isolate.
- **Travel** - If you're fully vaccinated, you no longer need to take a COVID-19 test either before or after you arrive in the UK. You still need to complete a passenger locator form.
- If you are not fully vaccinated, you may need to take a pre-departure test or you may not be able to travel – check the guidance for the country you want to go to. After you arrive, you need to take a PCR test on or before day 2, but you only need to quarantine if it's positive. You still need to complete a passenger locator form.

Trend

Figure 1. Epidemic curve of daily confirmed new cases in Trafford (1 July 2021 to 19 February 2022)



Source: PHE Covid-19 Situational Awareness Explorer

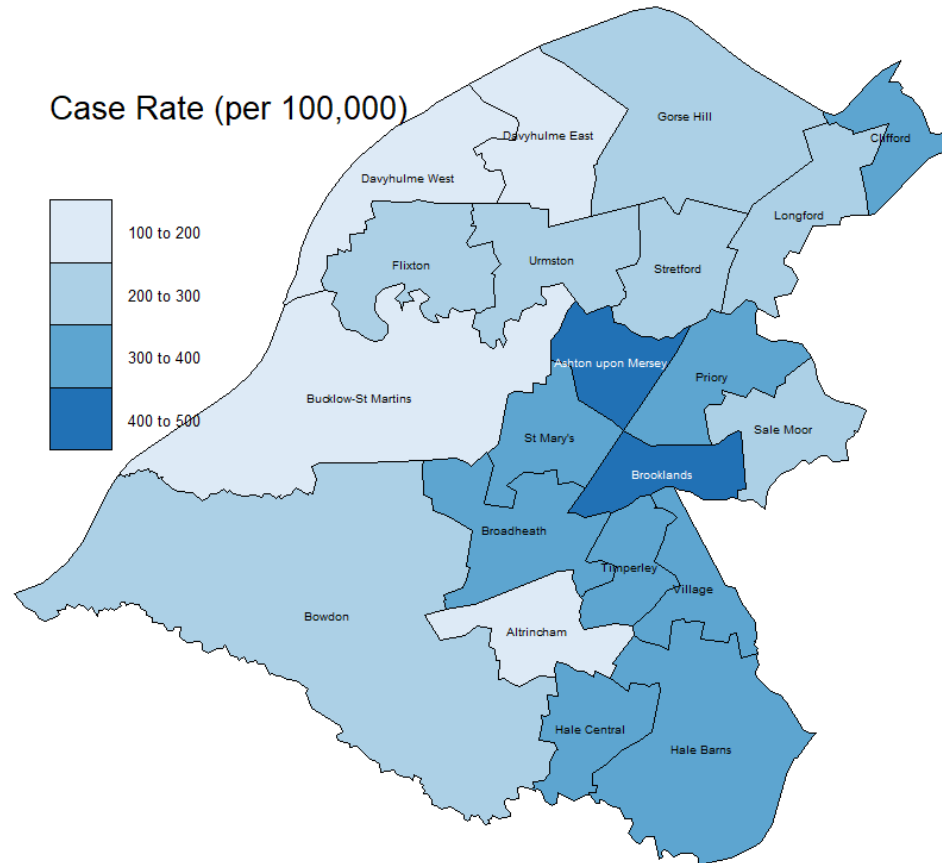
Summary Context:

We have seen a reduction in daily cases since early January and expect further reductions over the coming days. Daily cases are now dropping to their lowest levels since June 2021. Post December 2021 shows a growing proportion of COVID-19 reinfections ('Episode'). Please see link below for further information on COVID-19 reinfections.

[Cases definition now includes multiple infection episodes | Coronavirus in the UK \(data.gov.uk\)](#)

Geography

Figure 2. Incidence per 100,000 population by MSOA in Trafford 11 February to 17 February 2022)



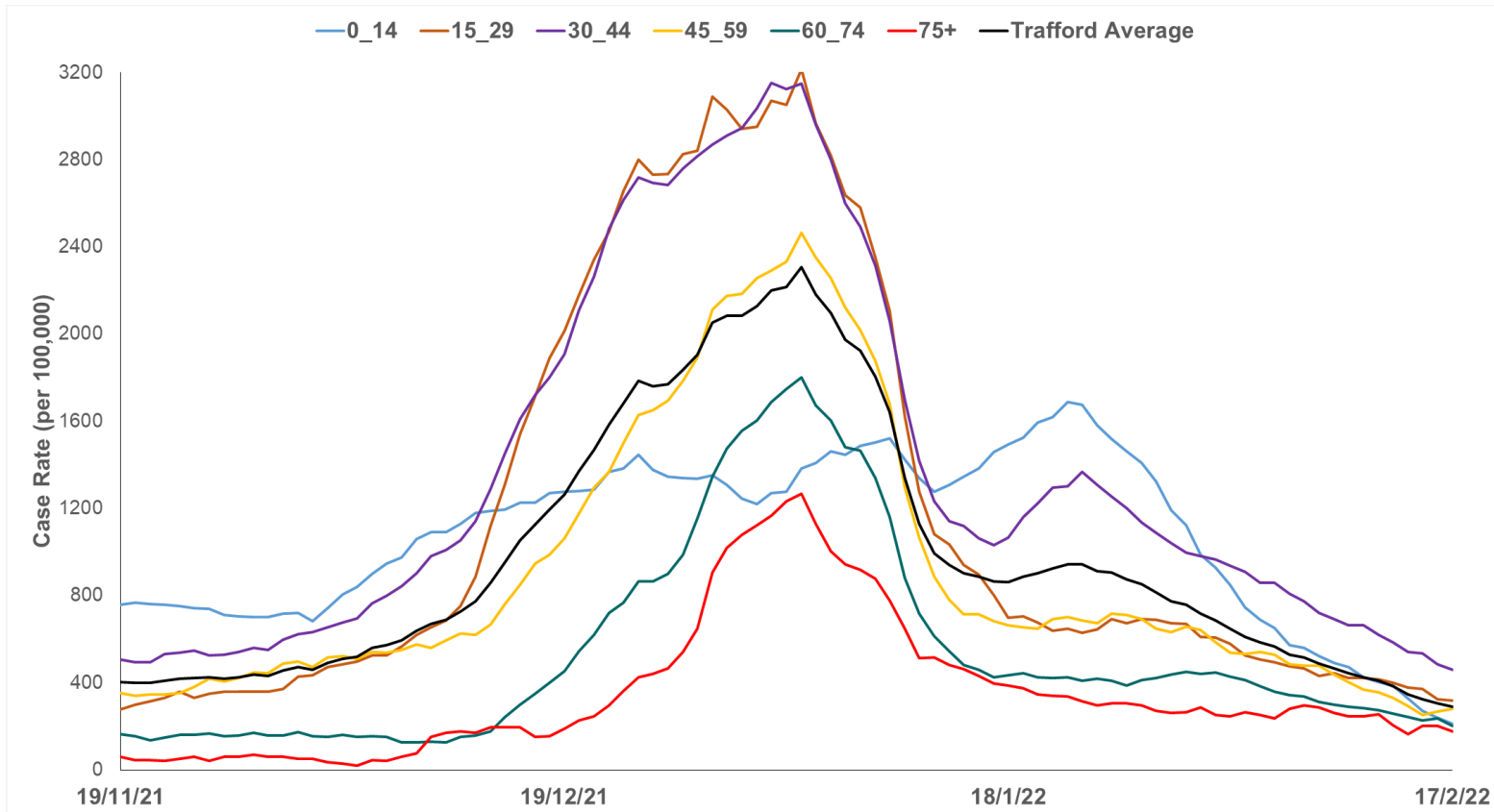
Source: PHE Covid-19 Situational Awareness Explorer

Summary Context:

Case rates have dropped for all wards when compared to the previous week. Case rates remain highest for Wards in Trafford’s Central and South localities. Case rates are highest for the Wards of Ashton upon Mersey (**455.9/100k**), Brooklands (**412.6/100k**), Broadheath (**391.8/100**), Hale Barns (**367.4/100k**), Priority (**365.5/100k**), and Timperley (**358.7/100k**).

Age Groups: Cases

Figure 3. Age-specific case rates per 100,000 population Trafford, 7-day moving average (19 November 2021 – 17 February 2022)



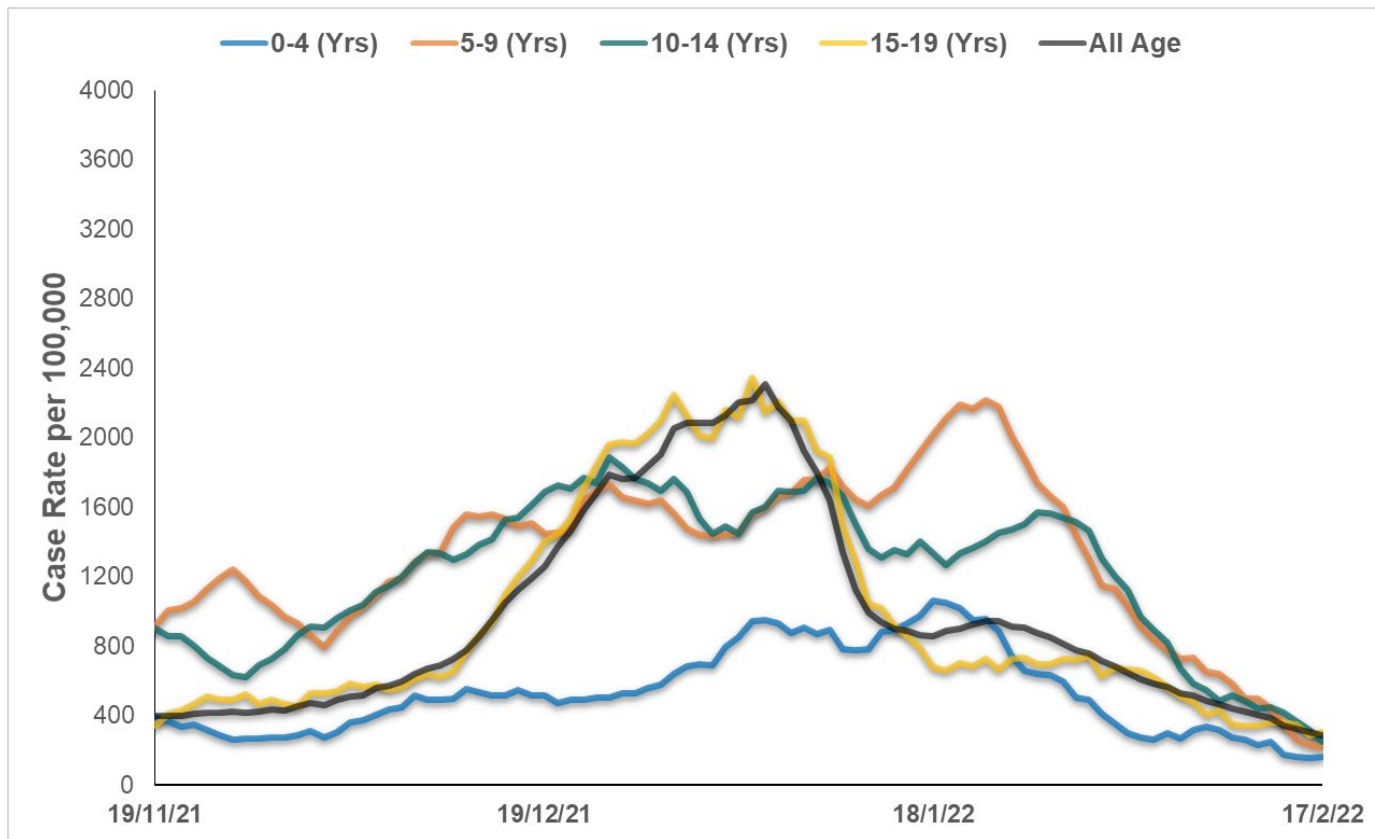
Source: PHE Covid-19 Situational Awareness Explorer

Summary Context:

Case rates are dropping for all age groups when compared to the previous week. Rates remain highest for 30-44 year olds (at **459.3/100k** from **662.2/100k** in the previous week). We have seen further reductions in the number of positive cases for residents aged 60+ (at **194.6/100k** from **276.1/100k** in the previous week).

School Age Groups: Cases

Figure 4. Age-specific case rates per 100,000 population Trafford, 7-day moving average (19 November 2021 – 17 February 2022)



Source: PHE Covid-19 Situational Awareness Explorer

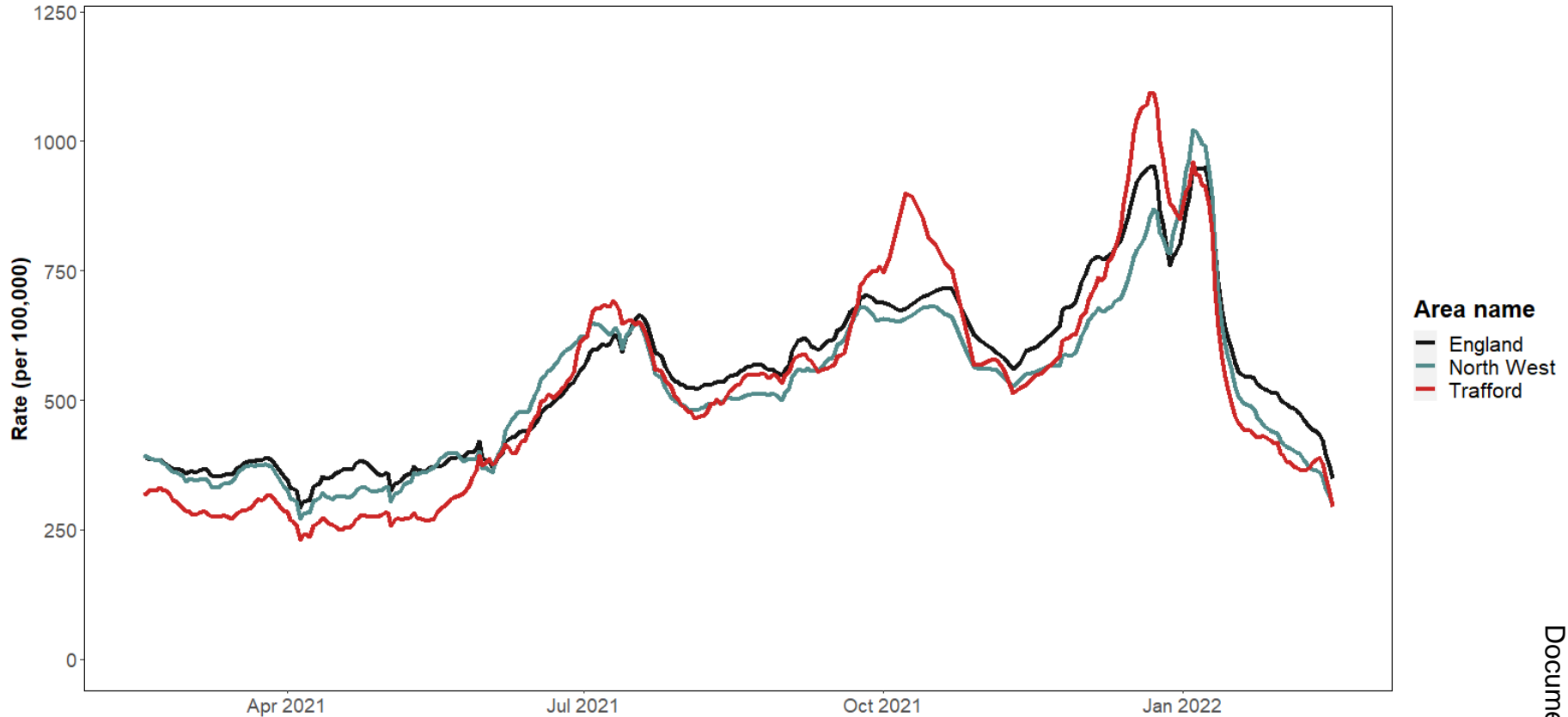
Summary Context:

Case rates have dropped for all young persons below the age of 20. We are seeing little variation in rates for 5-year age bands below the age of 20. Case rates are now highest for 15-19 year olds (at **308.1/100k**).

PCR Testing

Figure 5. Daily Testing Rate (7-day average): England, North West, & Trafford

Trafford, 16 February 2021 - 16 February 2022



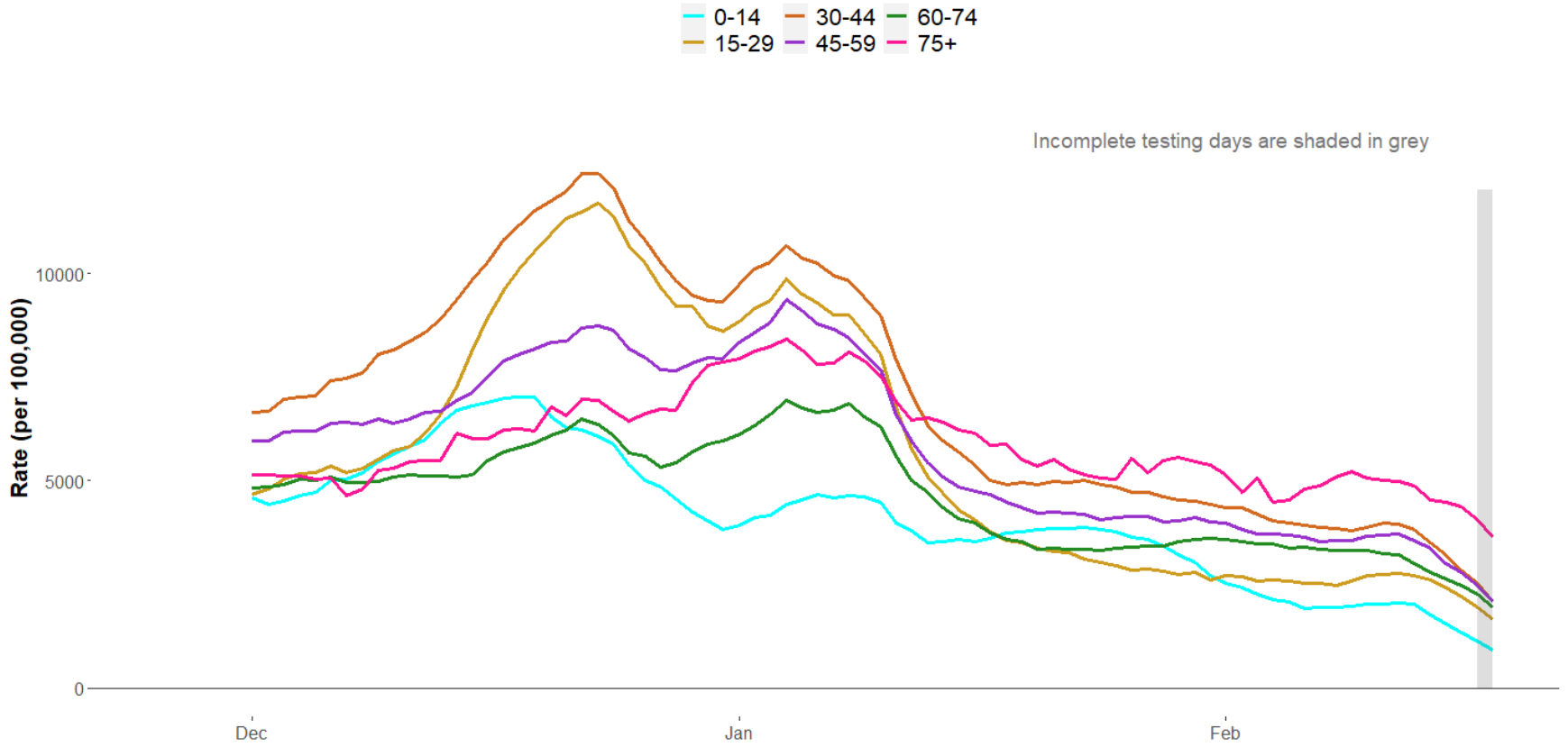
Source: PHE COVID-19 Situational Awareness Explorer

Summary Context:

PCR testing rates are now at their lowest since May 2021. Trafford has a similar testing rate to the North West, but lower testing rate to the England average. Trafford has the highest testing rate across the 10 GM boroughs, although there is little variation in testing between the boroughs.

Age Groups: PCR Testing

Figure 6. Age-Specific PCR testing rate per 100,000 residents (7-day moving)
Trafford, 1 December 2021 - 18 February 2022



Source: Data from PHE COVID-19 Situational Awareness Explorer

Summary Context:

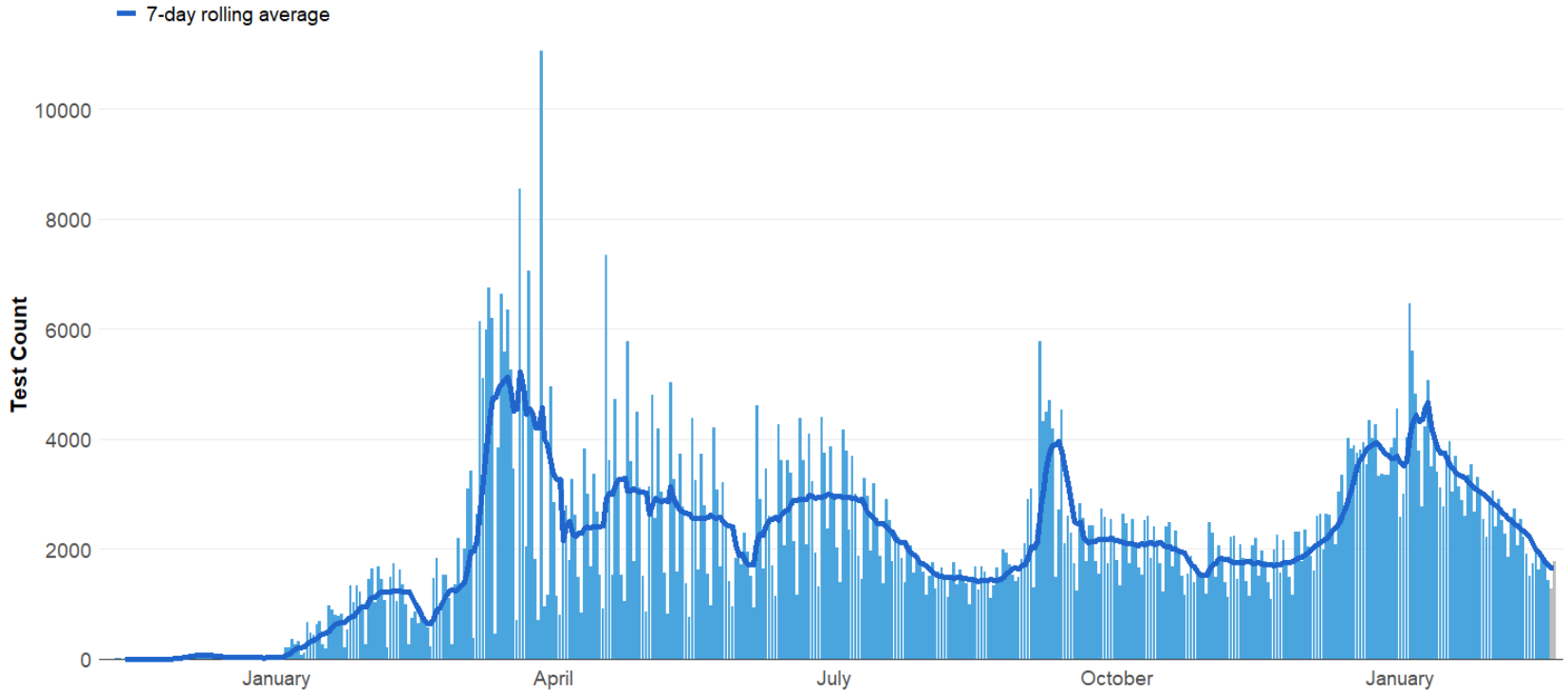
PCR testing rates had started to level-off, however the most recent week shows a reduction in testing for all age groups. PCR testing remains highest for residents above the age of 74 (**3636.6/100k**), and is lowest for 0-14 year olds (**928.7/100k**).

LFD Testing

Figure 7. Number of Daily LFD Tests

Trafford, 13 November 2020 - 20 February 2022

Incomplete testing days are shaded in grey



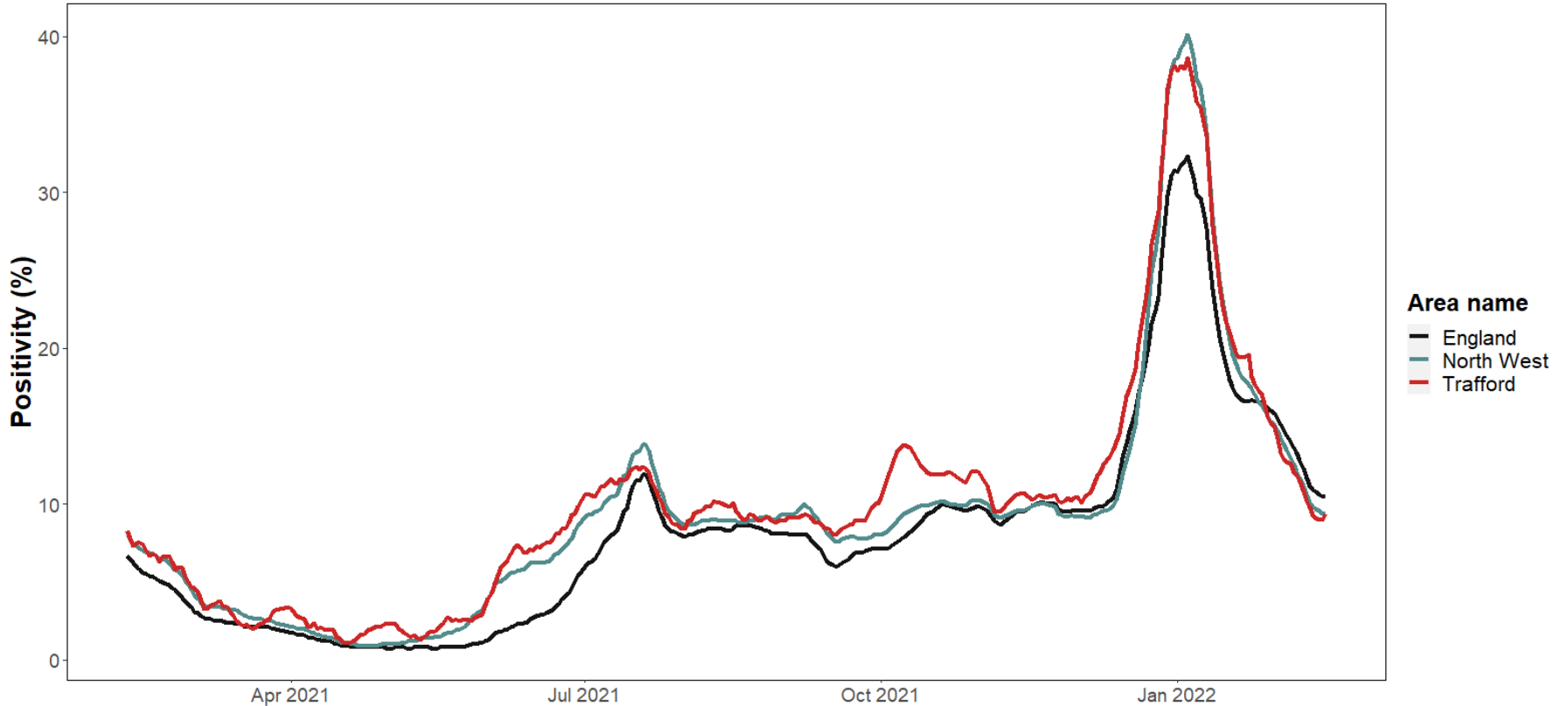
Summary Context:

Lateral Flow Testing has seen further reductions over the past week, similar to testing levels from November 2021. On average, **1695** tests are being conducted by Trafford residents per day. Trafford continues to have the highest LFT testing rate across the 10 GM boroughs.

Positivity

Figure 8. Weekly Positivity Rates: England, North West, & Trafford

Trafford, 16 February 2021 - 16 February 2022



Source: Data from PHE COVID-19 Situational Awareness Explorer

Summary Context:

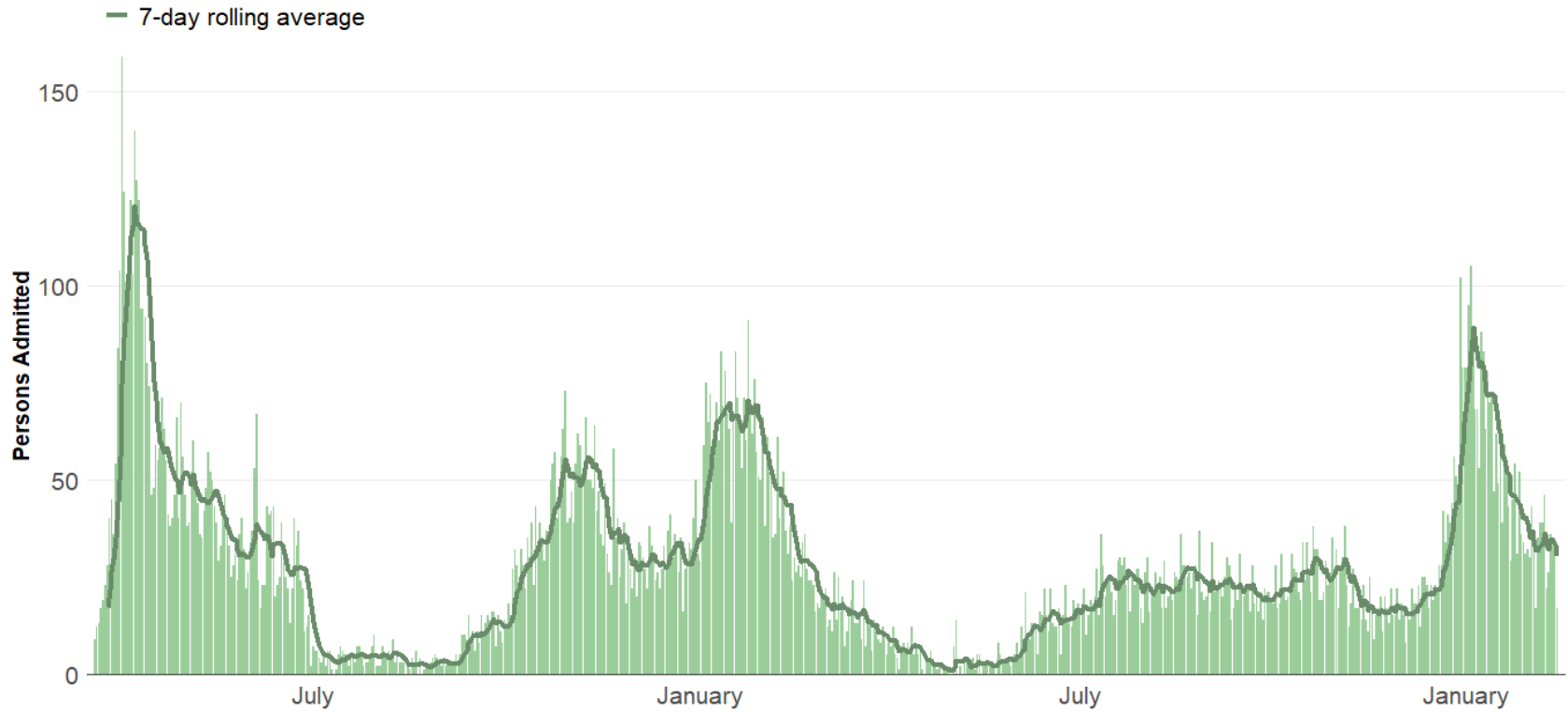
Trafford’s positivity rate has closely resembled the North West average over the past 6 weeks, but remains below the England average. Trafford currently has the 5th lowest positivity rate across the 10 GM boroughs, at **9.4%**.

Hospital Admissions

(Data includes any resident (not specific to Trafford-only residents) for: Manchester University, Stockport, and Warrington & Halton Teaching Hospital Foundation Trusts)

Figure 9. Daily count of COVID-19 hospital admissions

19 March 2020 to 13 February 2022



PHE Coronavirus Dashboard

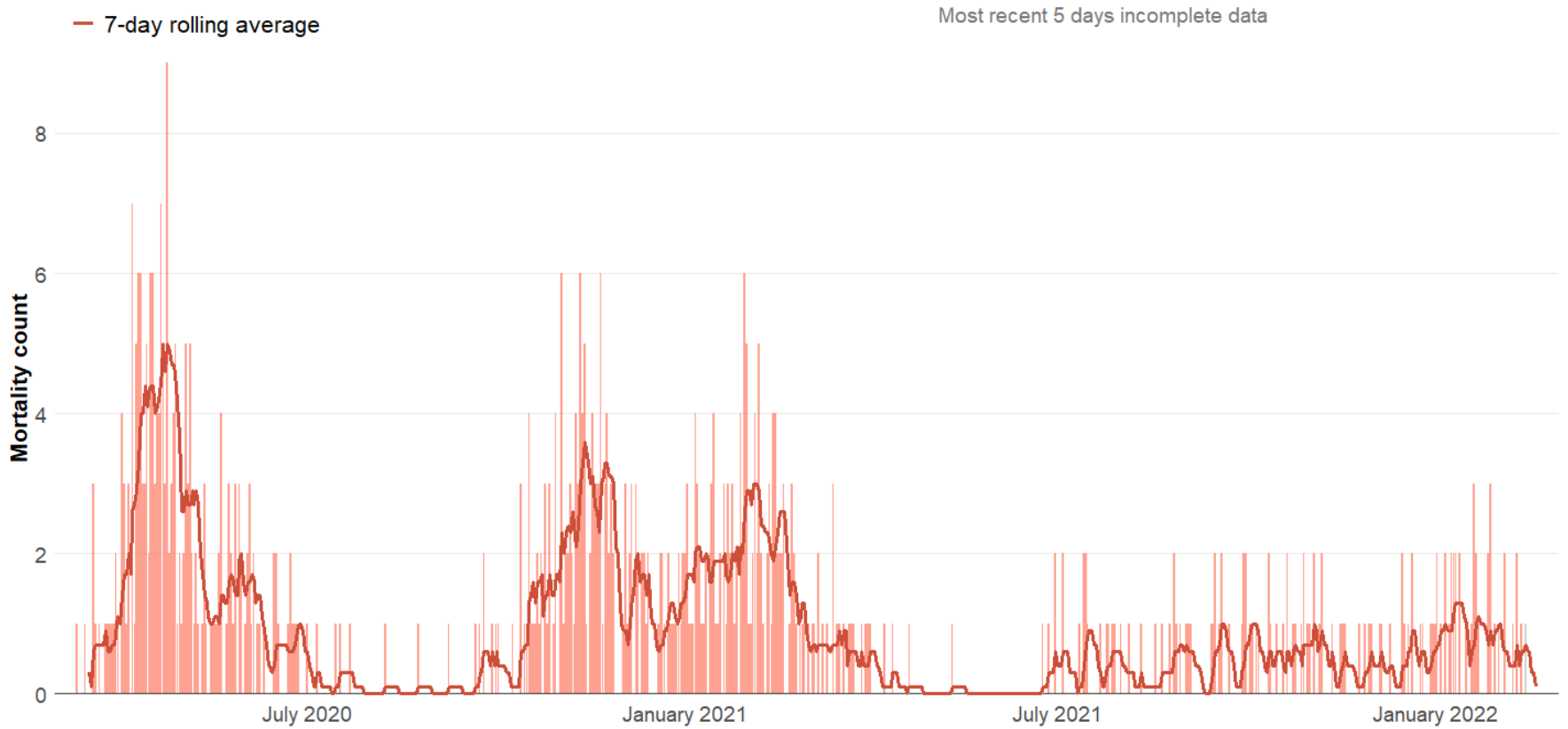
Summary Context:

We have seen further reductions in local hospital admissions linked to COVID-19 over the past week, however the rate of reduction has slowed down when compared to the previous 5 weeks. There were **212** COVID-19 admissions during the week ending Sunday 13 February 2022 compared with **238** COVID-19 admissions during the previous week.

Trafford Resident COVID-19 Mortality

Figure 10. Daily count of COVID-19 deaths within 28 days of positive test result

Trafford, 11 March 2020 - 19 February 2022



Source: PHE Coronavirus Dashboard

Summary Context:

There was a slight increase in the number of deaths linked to COVID-19 at the end of January, however we haven't seen that continue into February. There were **5** deaths for Trafford residents testing positive from COVID-19 in the 14 days up to Sunday 20 February 2022 compared with **9** deaths for Trafford residents during the previous week.

Vaccinations

Overview

- The total percentage of Trafford residents (Aged 12+) administered their first vaccine dose by **20-2-2022** was **83.8%** (increasing by **0.1%** from the previous week).
- The total percentage of Trafford residents (Aged 12+) administered both vaccine doses by **20-2-2022** was **79%** (increasing by **0.3%** from the previous week).
- Booster uptake is at **85.6%** (increasing by **0.1%** from the previous week) for residents who are **currently** eligible (eligible from time of second dose).

Cohort Groups

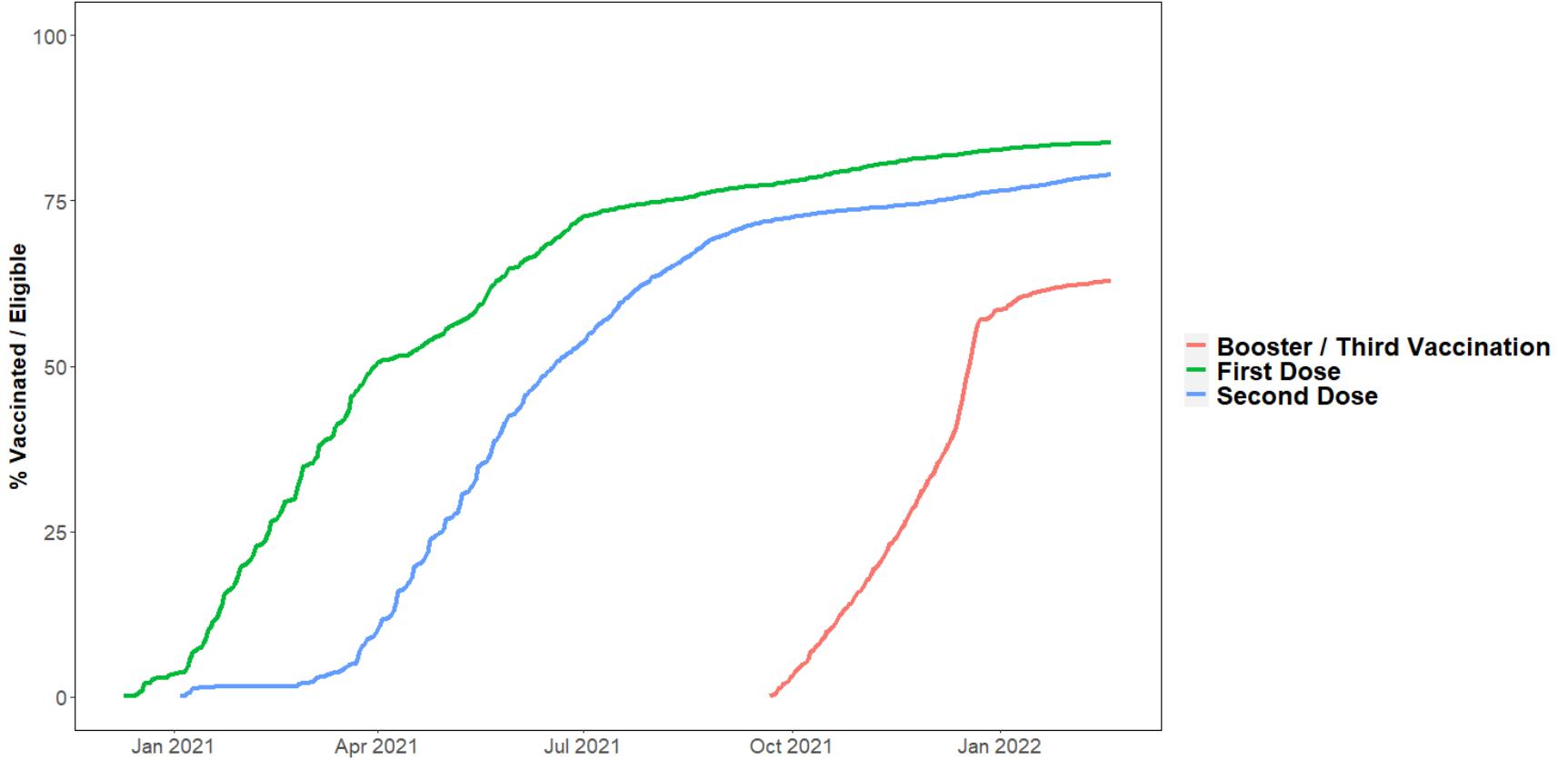
- Vaccine uptake remains lowest in adults and young people below the age of **40**. Similar to patterns we have seen among 18-39 year olds, vaccine uptake has stalled among **16-17** year olds – still **80%**.
- Vaccine uptake is at **72.8%** for 18-29 year olds (increasing by **1.5%** since January 1st) and **75.5%** for 30-39 year olds (increasing by **0.9%** since January 1st).
- Vaccine uptake is at **73%** for 16-17 year olds (increasing by **3.2%** since January 1st) and **61.8%** for 12-15 year olds (increasing by **7.8%** since January 1st).
- Vaccine uptake for priority groups 1-9 is at **91.6%**, increasing by **0.2%** since January 1st.
- Uptake (1st dose cohorts 1-12) across Trafford's four localities is lowest in the north (**74.1%**) and highest in the south (**87%**).
- There is a social gradient in vaccination uptake (first dose) across Trafford, with decreasing uptake as the level of deprivation increases (**69.7%** for most deprived compared to **89.1%** for least deprived areas). This gradient widens as we drop down the age groups.
- We are seeing variation in second dose and booster uptake, also linked to age and deprivation.

Programme Changes

- An additional booster dose is to be offered to people aged over 75, residents of care homes for older people, and immunosuppressed people aged 12 and over. This programme will be rolled out this spring to mitigate the waning immunity amongst these more vulnerable groups.
- The in-school 12-15yr old programme of clinics is well underway across our secondary school settings, plus in out-of-school clinics. Details local clinics can be found here: <https://www.traffordccg.nhs.uk/Coronavirus/COVID-19-vaccine-walk-in-clinics-in-Trafford.aspx>
- Children aged between 5 and 11 who are most at risk of COVID-19 are now being offered the vaccine. Children aged 5 -11 who are in a clinical risk group or who live with someone who is in immunosuppressed can get the first dose of the COVID vaccine in line with advice set out by the JCVI.
- Healthy 5-11 year olds will be offered the covid vaccine. Details of this programme have not yet been published however it is expected roll out to commence in April, with a focus on this being a non-urgent offer.
- Adults who had COVID-19 more than 28 days ago and missed their booster should now get their booster vaccine as soon as possible. Children aged 12-15 should wait 12 weeks after testing positive before having their vaccine.
- People planning to travel to abroad on holiday should check vaccine requirements as many countries now require travellers to be fully vaccinated, in some cases including a booster.

Vaccine Delivery Timeline

Figure 11. Running Total of First, Second, and Third/Booster Dose Vaccines
 Trafford Residents, up to February 20th 2022



Source: COVID-19 Situational Awareness Explorer

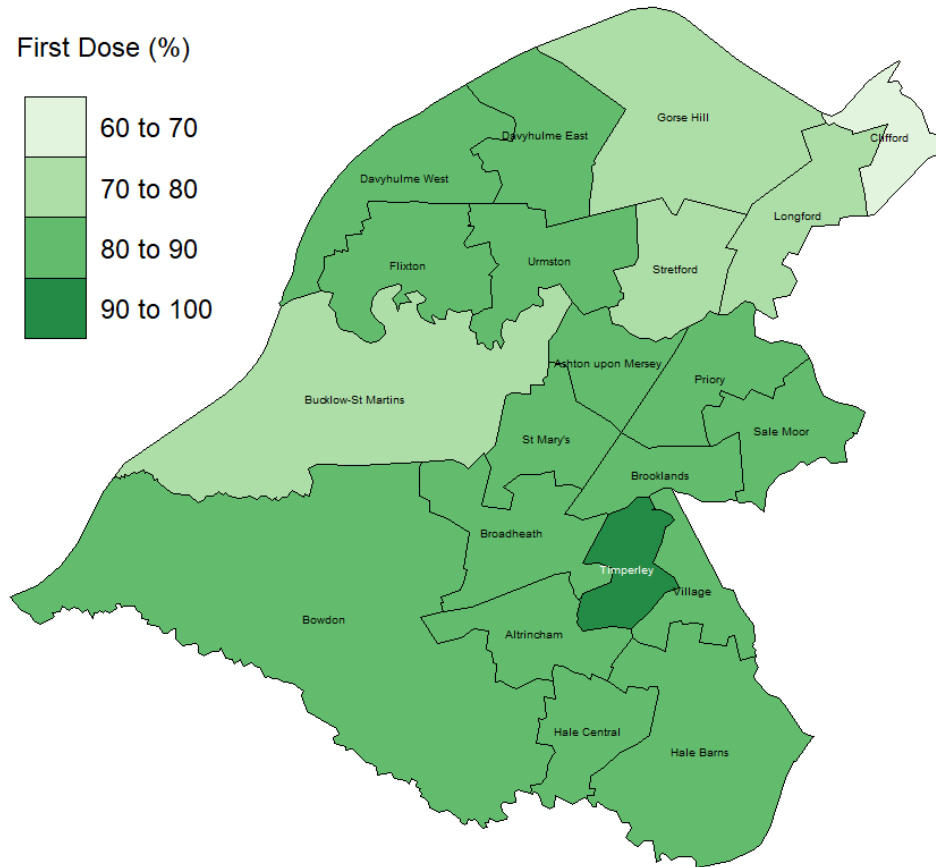
Summary Context:

Vaccine uptake for residents above the age of 12 is progressing slowly, increasing by **0.1%** in residents receiving their first dose and by **0.2%** in residents receiving both vaccine doses within the last 7 days (up to February 13th). Third dose / booster vaccines have increased by **0.2%** within the last 7 days.

Please note: Booster uptake in this slide refers to every residents aged 12+, regardless of eligibility status.

Vaccine Uptake by Ward

Figure 12. First dose vaccine uptake (%) for all eligible residents (12+) by Ward
Trafford, up to 21st February 2022



Summary Context:

Vaccine uptake is lowest in Trafford's North locality and highest in Trafford's South locality. We are seeing variation in vaccine uptake (first dose) across the borough, ranging from **67.5%** (Clifford) to **91.2%** (Timperley). Timperley remains the only Ward to have a first dose uptake above 90%.

Further resources

- [COVID-19 page](#) on [Trafford Data Lab's](#) website
- [COVID-19 Resources](#) developed by [Manchester Health & Care Commissioning](#)
- The Government [Coronavirus dashboard](#)
- [Our World in Data's](#) coronavirus pages

This page is intentionally left blank